

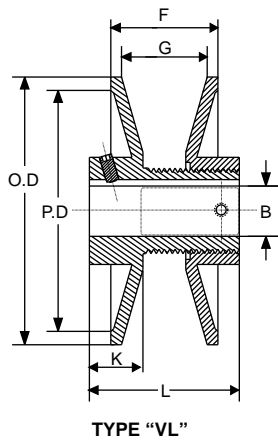
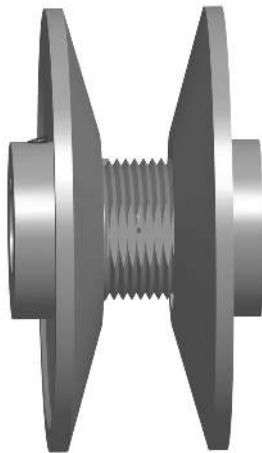
VARIABLE PITCH SHEAVES

- Used with 3L, 4L, 5L, A, AX, B, BX, 5VX belts
- Ideal for HVAC applications
- Manufactured from ASTM graded close grain cast iron
- Groove angle meets RMA specification (Rubber Manufacturer Association)
- Powder Coat paint rated to withstand 500 hour salt spray
- Provided with 5/16-18 NC knurl cup point hollow head setscrew
- Industry standard keyseats

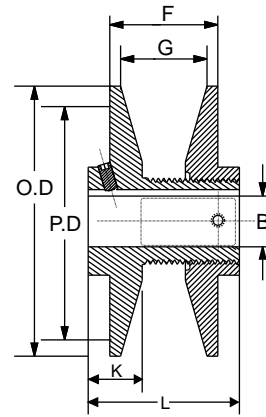
VL & VM VARIABLE PITCH SHEAVES

CAST IRON

"VL" & "VM"



TYPE "VL"



TYPE "VM"

PART NO.	DIAMETER RANGE												STOCK BORE SIZES				LIST PRICE
	"3L" BELTS				"4L" OR "A" BELTS				"5L" OR "B" BELTS				1/2	5/8	3/4	7/8	
	MIN. PITCH	TURNS OPEN	MAX PITCH	TURNS OPEN	MIN. DATUM	TURNS OPEN	MAX DATUM	TURNS OPEN	MIN. DATUM	TURNS OPEN	MAX DATUM	TURNS OPEN					
1VL25	1.6	4	2.4	0	-	-	-	-	-	-	-	-	x	x	-	-	\$11.72
1VL30	1.8	4	2.7	0	-	-	-	-	-	-	-	-	x	x	-	-	\$12.20
1VL34	1.7	4	2.5	0	1.9	5	2.9	0	2.4	5	3.2	1	x	x	x	-	\$12.20
1VL40	2.3	4	3.1	0	2.4	5	3.4	0	2.7	6	3.7	1	x	x	x	x	\$15.00
1VL44	2.7	4	3.5	0	2.8	5	3.8	0	3.1	6	4.1	1	x	x	x	x	\$19.00
1VM50	3.3	4	4.1	0	3.4	5	4.4	0	3.7	6	4.7	1	x	x	x	x	\$30.00

Do not use "VL" and "VM" sheaves with Notch Belt Ratings.

PART NO.	DIMENSIONS							WGT. LBS.	LIST PRICE
	OUTSIDE	F		G		L	K		
		MAX.	MIN.	MAX	MIN.				
1VL25	2.50	25/32	17/32	5/8	3/8	1 1/2	37/64	0.80	\$11.72
1VL30	2.87	25/32	17/32	5/8	3/8	1 1/2	37/64	1.00	\$12.20
1VL34	3.15	1	5/8	7/8	1/2	1 11/16	37/64	1.10	\$12.20
1VL40	3.75	1	5/8	7/8	1/2	1 11/16	37/64	1.30	\$15.00
1VL44	4.15	1	5/8	7/8	1/2	1 11/16	37/64	1.30	\$19.00
1VM50	4.75	1 1/16	11/16	7/8	1/2	1 7/8	21/32	2.80	\$30.00

Do not use "VL" and "VM" sheaves with Notch Belt Ratings.

"VL/VM" Sheaves are machined on essential surfaces only. Both are furnished with standard Keyseats and Hollow Head Setscrews.

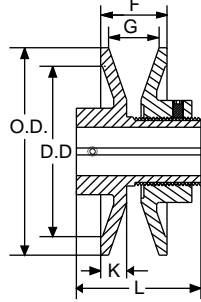
STANDARD KEYSEATS

BORE RANG	KEYSEAT
1/2	None
5/8 to 7/8	3/16 x 3/32

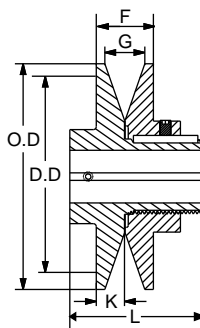
SINGLE GROOVE VARIABLE PITCH SHEAVES FOR "3L", "4L", "5L", "A", "B", AND "5V" BELTS

CAST IRON

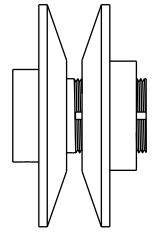
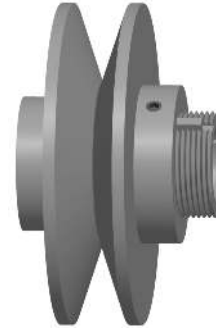
"3L", "4L", "5L",
"A", "B" & 5V BELT



TYPE-1



TYPE-2



PART NO.	TYPE	DIAMETER RANGE																LIST PRICE
		"3L" BELTS				"4L" OR "A" BELTS				"5L" OR "B" BELTS				"5V" BELTS				
		MIN. PITCH	TURNS OPEN	MAX PITCH	TURNS OPEN	MIN. DATUM	TURNS OPEN	MAX DATUM	TURNS OPEN	MIN. DATUM	TURNS OPEN	MAX DATUM	TURNS OPEN	MIN. PITCH	TURNS OPEN	MAX PITCH	TURNS OPEN	
1VP25	1	1.6	4	2.4	0	-	-	-	-	-	-	-	-	-	-	-	-	\$18.48
1VP30	1	1.8	4	2.7	0	-	-	-	-	-	-	-	-	-	-	-	-	\$18.76
1VP34	1	1.7	4	2.5	0	1.9	5	2.9	0	2.4	5	3.2	1	-	-	-	-	\$23.60
1VP40	1	2.3	4	3.1	0	2.4	5	3.4	0	2.7	6	3.7	1	-	-	-	-	\$23.90
1VP44	1	2.7	4	3.5	0	2.8	5	3.8	0	3.1	6	4.1	1	-	-	-	-	\$25.80
1VP44	2	2.7	4	3.5	0	2.8	5	3.8	0	3.1	6	4.1	1	-	-	-	-	\$35.80
1VP50	1	3.3	4	4.1	0	3.4	5	4.4	0	3.7	6	4.7	1	-	-	-	-	\$30.40
1VP50	2	3.3	4	4.1	0	3.4	5	4.4	0	3.7	6	4.7	1	-	-	-	-	\$43.52
1VP56	1	3.9	4	4.7	0	4.0	5	5.0	0	4.3	6	5.3	1	-	-	-	-	\$45.40
1VP56	2	3.9	4	4.7	0	4.0	5	5.0	0	4.3	6	5.3	1	-	-	-	-	\$58.60
1VP60	2	-	-	-	-	4.2	5	5.2	0	4.3	6	5.5	0	-	-	-	-	\$71.00
1VP62	2	4.5	4	5.3	0	4.6	5	5.6	0	4.9	6	5.9	1	5.3	6	6.3	1	\$71.68
1VP65	2	-	-	-	-	4.7	5	5.7	0	4.8	6	6.0	0	5.2	6	6.4	0	\$74.30
1VP68	2	5.1	4	5.9	0	5.2	5	6.2	0	5.5	6	6.5	1	5.9	6	6.9	1	\$74.60
1VP71	2	-	-	-	-	5.3	5	6.3	0	5.4	6	6.6	0	5.8	6	7.0	0	\$79.20
1VP75	2	-	-	-	-	5.7	5	6.7	0	5.8	6	7.0	0	6.2	6	7.4	0	\$105.70

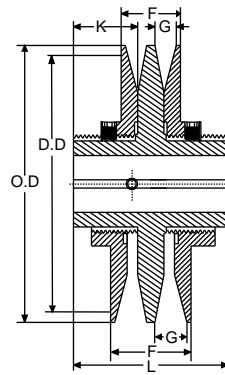
PART NO.	TYPE	DIMENSIONS								STOCK BORE marked "x"								WGT. LBS.	LIST PRICE
		O.D.	F		G		L	K	STOCK BORE marked "x"										
			MAX	MIN.	MAX	MIN.			1/2	5/8	3/4	7/8	1	1 1/8	1 1/4	1 3/8	1 5/8		
1VP25	1	2.50	13/16	9/16	5/8	3/8	1 1/2	5/8	x	-	-	-	-	-	-	-	-	0.70	\$18.48
1VP30	1	2.87	13/16	9/16	5/8	3/8	1 21/32	19/32	x	x	x	-	-	-	-	-	-	1.10	\$18.76
1VP34	1	3.15	1	11/16	13/16	1/2	1 7/8	21/32	x	x	x	x	-	-	-	-	-	1.40	\$23.60
1VP40	1	3.75	1 1/16	11/16	7/8	1/2	1 7/8	21/32	x	x	x	x	-	-	-	-	-	1.90	\$23.90
1VP44	1	4.15	1 1/16	11/16	7/8	1/2	1 7/8	21/32	x	x	x	-	-	-	-	-	-	2.40	\$25.80
1VP44	2	4.15	1 1/8	3/4	7/8	1/2	1 7/8	11/16	-	-	-	x	x	x	-	-	-	2.90	\$35.80
1VP50	1	4.75	1 1/16	11/16	7/8	1/2	2	25/32	x	x	x	-	-	-	-	-	-	2.90	\$30.40
1VP50	2	4.75	1 1/8	3/4	7/8	1/2	1 7/8	11/16	-	-	-	x	x	x	-	-	-	3.60	\$43.52
1VP56	1	5.35	1 1/16	7/8	7/8	1/2	1 7/8	21/32	x	x	x	-	-	-	-	-	-	3.80	\$45.40
1VP56	2	5.35	1 1/8	3/4	7/8	1/2	1 7/8	11/16	-	-	-	x	x	x	-	-	-	4.40	\$58.60
1VP60	2	6.00	1 1/4	7/8	1 1/32	21/32	1 21/32	7/16	-	-	-	x	x	-	x	-	x	6.50	\$71.00
1VP62	2	5.95	1 1/8	3/4	7/8	1/2	1 29/32	21/32	-	x	x	x	x	x	x	x	x	6.10	\$71.68
1VP65	2	6.50	1 1/4	7/8	1 1/32	21/32	1 21/32	7/16	-	-	x	x	-	x	-	x	x	6.80	\$74.30
1VP68	2	6.55	1 1/8	3/4	7/8	1/2	1 29/32	21/32	-	x	x	x	x	x	x	x	-	7.30	\$74.60
1VP71	2	7.10	1 1/4	7/8	1 1/32	21/32	1 21/32	7/16	-	-	x	x	-	x	-	x	-	8.20	\$79.20
1VP75	2	7.50	1 1/4	7/8	1 1/32	21/32	1 21/32	7/16	-	-	x	x	-	x	-	x	-	9.20	\$105.70

TWO GROOVE VARIABLE PITCH SHEAVES FOR "3L", "4L", "5L", "A", "B", AND "5V" BELTS

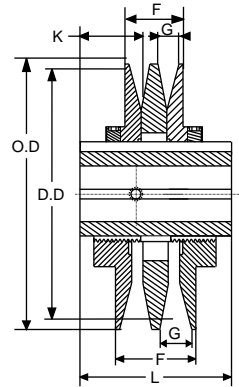
CAST IRON

"3L", "4L", "5L",

"A", "B" & 5V BELT



TYPE 4



TYPE 5

PART NO.	TYPE	DIAMETER RANGE												STOCK BORE SIZES												
		"3L" BELTS				"4L" OR "A" BELTS				"5L" OR "B" BELTS				"5V" BELTS				1/2	5/8	3/4	7/8	1	1 1/8	1 1/4	1 3/8	1 5/8
		MIN. PITCH	TURNS OPEN	MAX. PITCH	TURNS OPEN	MIN. DATUM	TURNS OPEN	MAX. DATUM	TURNS OPEN	MIN. DATUM	TURNS OPEN	MAX. DATUM	TURNS OPEN	MIN. PITCH	TURNS OPEN	MAX. PITCH	TURNS OPEN									
2VP36	4	1.9	4	2.7	0	2.0	5	3.0	0	2.5	5	3.3	1	-	-	-	-	x	x	x	x	x	-	-	-	-
2VP42	4	2.5	4	3.3	0	2.6	5	3.6	0	2.9	6	3.9	1	-	-	-	-	-	x	x	x	x	x	-	-	-
2VP50	5	3.3	4	4.1	0	3.4	5	4.4	0	3.7	6	4.7	1	-	-	-	-	-	x	x	x	x	x	-	-	-
2VP56	5	3.9	-	4.7	0	4.0	5	5.0	0	4.3	6	5.3	1	-	-	-	-	-	x	x	x	x	x	-	-	-
2VP60	5	-	-	-	-	4.2	5	5.2	0	4.3	6	5.5	0	-	-	-	-	-	-	x	x	-	x	-	x	x
2VP62	5	4.5	4	5.3	0	4.6	5	5.6	0	4.9	6	5.9	1	5.3	6	6.3	1	-	-	x	x	x	x	-	x	-
2VP65	5	-	-	-	-	4.7	5	5.7	0	4.8	6	6.0	0	5.2	6	6.4	0	-	-	x	x	-	x	x	x	x
2VP68	5	5.1	4	5.9	0	5.2	5	6.2	0	5.5	6	6.5	1	5.9	6	6.9	1	-	-	-	x	x	x	x	x	-
2VP71	5	-	-	-	-	5.3	5	6.3	0	5.4	6	6.6	0	5.8	6	7.0	0	-	-	x	x	-	x	-	x	x
2VP75	5	-	-	-	-	5.7	5	6.7	0	5.8	6	7.0	0	6.2	6	7.4	0	-	-	x	x	-	x	-	x	x

All fitted with Hollow Head Setscrews.

STANDARD KEYSEATS

PART NO.	TYPE	DIMENSIONS								WGT. LBS.	LIST PRICE
		O.D.	F		G		L	K			
			MAX.	MIN.	MAX.	MIN.					
2VP36	4	3.35	2	1 3/8	13/16	1/2	3	1 3/16	3.40	\$56.80	
2VP42	4	3.95	2 1/8	1 3/8	7/8	1/2	3	1 3/16	4.40	\$65.10	
2VP50	5	4.75	2 1/8	1 3/8	7/8	1/2	3	1 3/16	6.30	\$75.04	
2VP56	5	5.35	2 1/8	1 3/8	7/8	1/2	3	1 3/16	7.80	\$88.30	
2VP60	5	6.00	2 3/8	1 5/8	1/32	21/32	3 1/4	1 1/4	10.60	\$112.80	
2VP62	5	5.95	2 1/8	1 3/8	7/8	1/2	3	1 3/16	10.00	\$112.90	
2VP65	5	6.50	2 3/8	1 5/8	1 1/32	21/32	3 1/4	1 1/4	12.30	\$121.00	
2VP68	5	6.55	2 1/8	1 3/8	7/8	1/2	3	1 3/16	11.70	\$124.90	
2VP71	5	7.10	2 3/8	1 5/8	1 1/32	21/32	3 1/4	1 1/4	14.60	\$128.00	
2VP75	5	7.50	2 3/8	1 5/8	1 1/32	21/32	3 1/4	1 1/4	16.50	\$189.60	

BORE RANGE	KEYSEAT
1/2	none
5/8 to 7/8	3/16 x 3/32
1 to 1 1/4	1/4 x 1/8
1 3/8	5/16 x 5/32
1 5/8	3/8 x 3/16