

Benchmarking Motors for a New Era



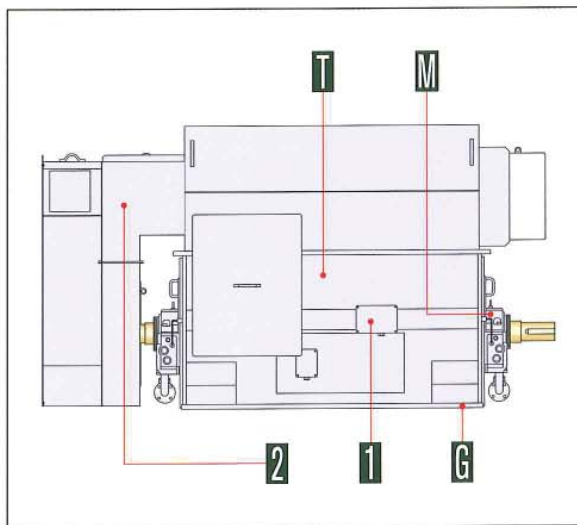
Introducing TMEiC's new TM21-G Series

- Amazingly small footprint
- Minimizing weight
- Compliance to International Standards
- Minimal maintenance required
- Exceptional reliability



TM21-G Series

Specially designed for a small footprint and easy operation, TM21-G Series motors require less time for installation, maintenance and replacement while ensuring the high performance synonymous with the TMEiC name. All motors offer a range of benefits that answer the diversified needs of our customers today.



Specifications

Rated voltage	Up to 11kV		
Rated speed	Up to 3,600rpm (Applicable for VVVF drive)		
Number of poles	2P-14P		
Cooling method	WP2	IC01	
	TEAAC	IC611	
	TEWAC	IC81W	
Enclosure	WP2	IP24W	
	TEAAC	IP54, IP55, IP56	
	TEWAC	IP54, IP55, IP56	
Mounting method	IMB3 (Horizontal), IMV1 (Vertical)		
Shaft height	Up to 630mm		
Thermal class	155(F)		
Temperature rise limit	Class B rise		
Ambient temperature	Min. -20°C, Max. 40, 45, 50°C		
Bearings	Antifriction / Sleeve (self-lube / forced-lube)		
Lubricants	Antifriction	SKF LGHP2 or equivalent	
	Self-lube sleeve	2P, 4P	Mobil SHC 624/B24
		6P	Mobil SHC 825
		Slower	Mobil SHC 626
Standards	IEC, BS, IS, AS, NEMA, JEC, etc...		

* Six winding RTDs and space heater for motor frame included as standard equipment when required.

Total weight reduced

T Motor Materials, Shipping & Manufacturing Costs Reduced

Lighter motor introduced, enabling...

- Reduction in motor, shipping and foundation costs
- Reduction in installation work

Maintenance simplified

M Exceptionally Low Maintenance Cost

- Replace sleeve bearing metal without disassembling motor
- Antifriction bearings used throughout, enabling...
 - Easy access to backup bearings required for periodic replacement
 - Low-cost maintenance

2-piece fan cover

2 Maintenance So Easy Anyone Can Do It

Two-piece fan cover introduced, enabling...

- Removal of heat exchanger without disassembly
- Easy maintenance

1 common junction box as standard equipment

1 Installation and Replacement Work Reduced

Instrument cables connected in one junction box, enabling...

- Separate cable connections to be gathered in one spot
- Substantial reduction in installation and replacement work

Greatly reduced installation time

G Shorter SDM Time Realized

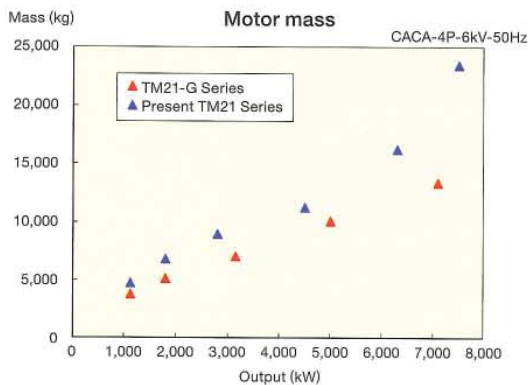
A shorter total motor length is introduced, enabling...

- Installation in narrow spaces
- Reduction in time required for installation and alignment
- Reduction in time required for shutdown maintenance (SDM) during overhauls

Nothing Quite Like It – Experience a TM21-G

Lightweight motors

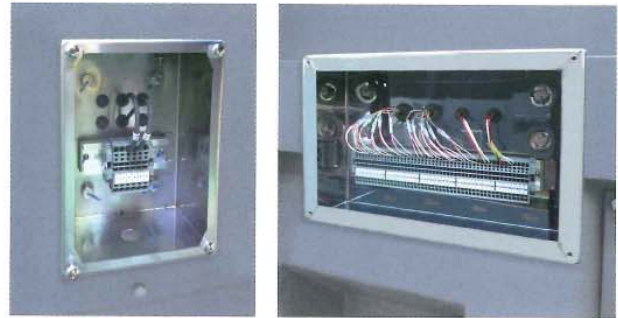
World-class Lightweight Design



The optimal design of these world-class motors has realized a 20–30% weight reduction compared to our previous motor series. This contributes to various benefits including reduced shipping cost, lower foundation load/crane capacity and simplified maintenance.

Junction box

Cable Connection Work Simplified

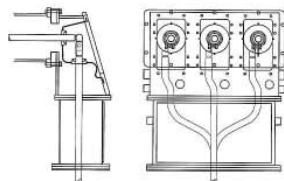


Instrument cables are routed into a single junction box and the incorporation of clamp-type terminals as standard simplifies the cable connection process. As a result, external cable connection work is simplified reducing installation times. Furthermore, the junction box is made of stainless steel, increasing operating durability under harsh conditions.

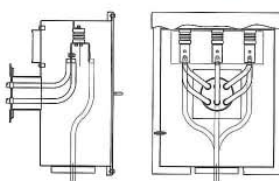
Main circuit terminal box

Choice of Terminal Boxes

Phase-segregated terminal box



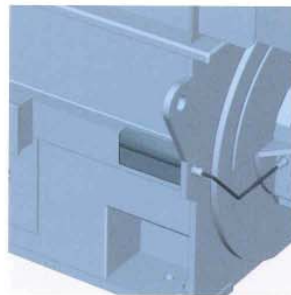
Standard terminal box



A variety of terminal boxes are available as standard equipment in response to market demand. Choices include a standard terminal box, a phase-segregated terminal box and a large, a terminal box with large double terminals compliant with NEMA standards.

Cable duct

Replacement So Easy a Novice Can Do It



Instrument and space heater cables pass through an IP55 cable duct that is hermetically sealed using steel plates. This helps to ensure motor operation even in harsh environments. Additionally the iron piping and armored cables required when running cables alongside the motor surface have been eliminated. As a result, less time and effort are required when replacing instruments, and it's so easy virtually anyone can do it.

As a result, less time and effort are required when replacing instruments, and it's so easy virtually anyone can do it.

Global Sales/Service Network

With bases located around the world, regional TMEIC companies and TMEIC motor service shops provide reliable customer support whenever needed.

