

# ON-SITE SERVICE: VIBRATION ANALYSIS

## 24/7 Emergency Service

***Vibration Analysis (VA) is performed on-site by KJ Electric technicians in any commercial, industrial, or maintenance environment. The purpose of Vibration Analysis is to locate and document machine vibration in rotating equipment.***

***With these readings we can then trend the equipment and can spot problems and repair them before they cause an outage, damage to equipment, or loss of production.***

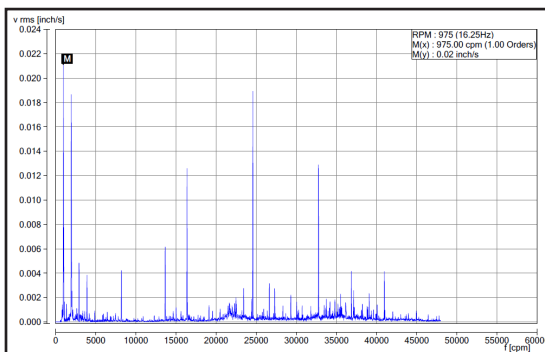
### Surveyable Equipment:

- Electric Motors
- Drive Shafts
- Pumps
- Air Compressors
- Chiller Units
- Gearboxes
- Conveyer Lines
- HVAC Equipment

### Vibration Analysis Procedure:

- Readings on equipment are taken at 5 points (at least)
- The reading on the equipment is done in an organized manner, with guards removed as needed.
  - *Customer must provide personnel to remove covers.*
- All readings are saved to the vibration equipment during the survey.
- All reports contain a summary of work completed.
  - *Along with recommendations for problems found*
- Reports are emailed within 2 weeks of job completion.

***KJ Electric Technicians use Vib Expert II Vibration Unit by Pruftechnik.  
Reports are created using Omnitrend Software.***



**FOR MORE INFORMATION CALL YOUR LOCAL KJ ELECTRIC REPRESENTATIVE TODAY!**

#### CORPORATE HEADQUARTERS:

[admin@kjelectric.com](mailto:admin@kjelectric.com)

**SYRACUSE:** 5894 East Molloy Road, Syracuse NY 13211

(315) 454-5535 • FAX: (315) 455-5564 • [www.kjelectric.com](http://www.kjelectric.com)



#### ALBANY

[albany@kjelectric.com](mailto:albany@kjelectric.com)

146 Railroad Ave  
Albany, NY 12205

**(518) 783-7152**

FAX: (518) 783-7378

#### BINGHAMTON

[binghamton@kjelectric.com](mailto:binghamton@kjelectric.com)

119 Corporate Drive  
Binghamton, NY 13904

**(607) 772-1760**

FAX: (607) 772-1127

#### BUFFALO

[buffalo@kjelectric.com](mailto:buffalo@kjelectric.com)

170 Fire Tower Drive  
Buffalo, NY 14150

**(716) 693-2500**

FAX: (716) 693-2544



#### ROCHESTER

[rochester@kjelectric.com](mailto:rochester@kjelectric.com)

54 Pixley Industrial Pkwy. Ext.  
Rochester, NY 14624

**(585) 426-3900**

FAX: (585) 426-0739